



**Jo  
Chrona**



**Dr. Shelley Moore**

**Kick Off to the Learning Series**

**Transforming Inclusive Education: Designing for Diversity, Equity &  
Inclusion**

# Our Plan for Today

Opening

- Introductions
- Staying Connected

Morning with a break  
Unpacking the Learning Series

- Big Ideas
- Framework

Lunc

- 1 hour

Afternoon with a break  
Unpacking the Learning Series

- Overview & Structure
- Fireside Chats

Wrap Up

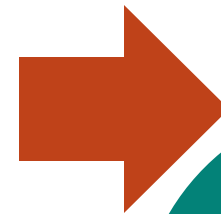
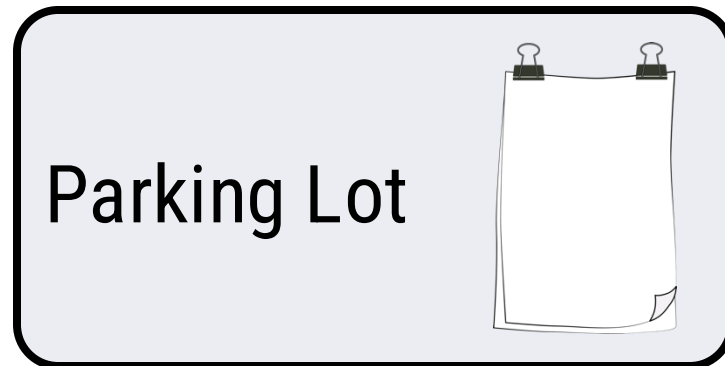
- Reflections
- Next Steps

# Who are you? What brings you to this place?

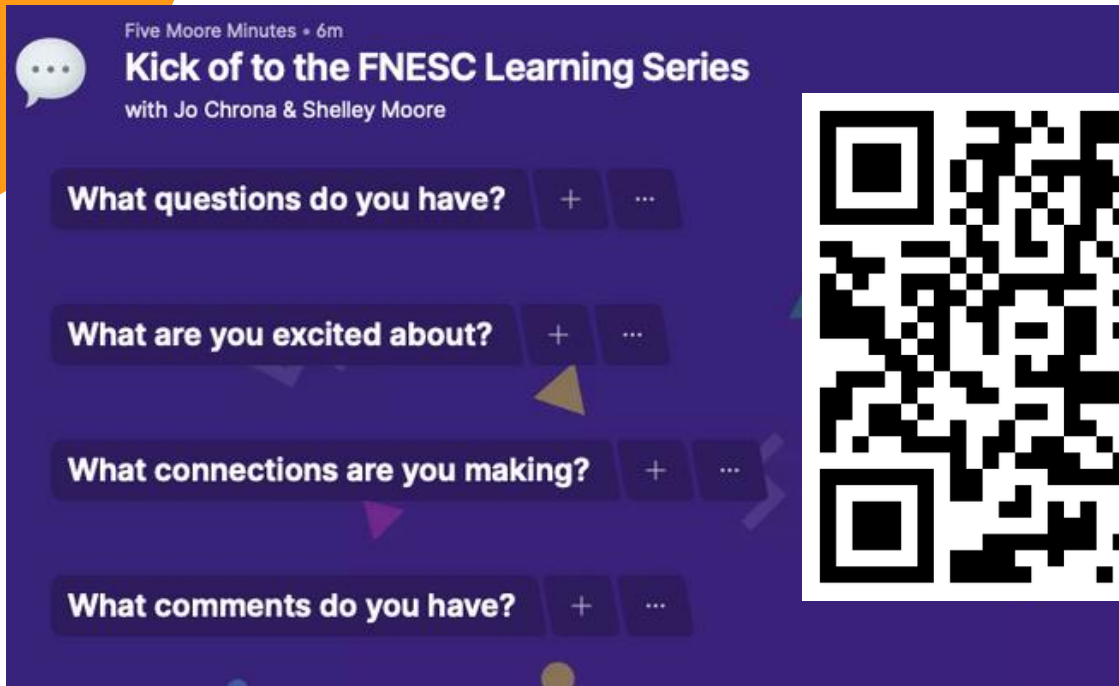
- Where is **home** for you?
- What are some of the **roles** you have in your **community**?
- What **identities** do you hold?
- What are some of your **interests**?
- What is a **strength** that you teach to others?
- what is a **life event** that shaped who you are?
- What is something that is **important to know** about you?
- What **brought you here today** to this place?

# Staying Connected Today

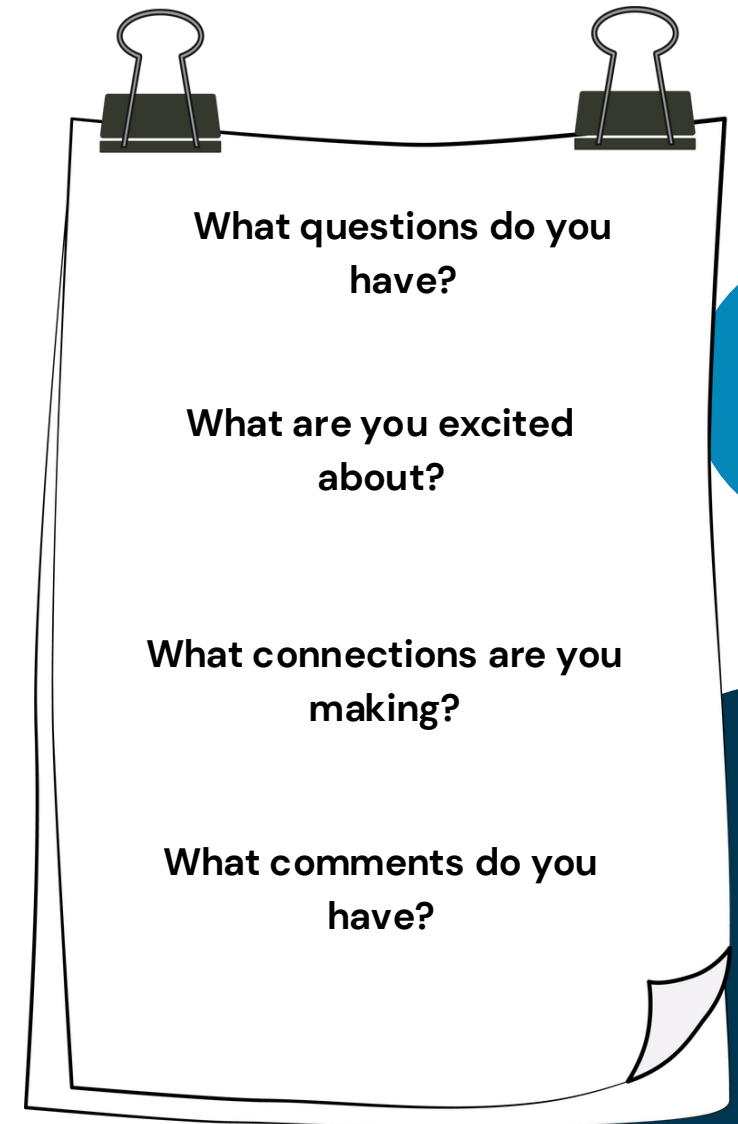
Questions,  
Comments,  
Responses



# Questions, Comments, Responses



or



# Our Plan for Today

Opening

- Introductions
- Staying Connected

Morning with a break  
Unpacking the Learning Series

- Big Ideas
- Framework

Lunc

- 1 hour

Afternoon with a break  
Unpacking the Learning Series

- Overview & Structure
- Fireside Chats

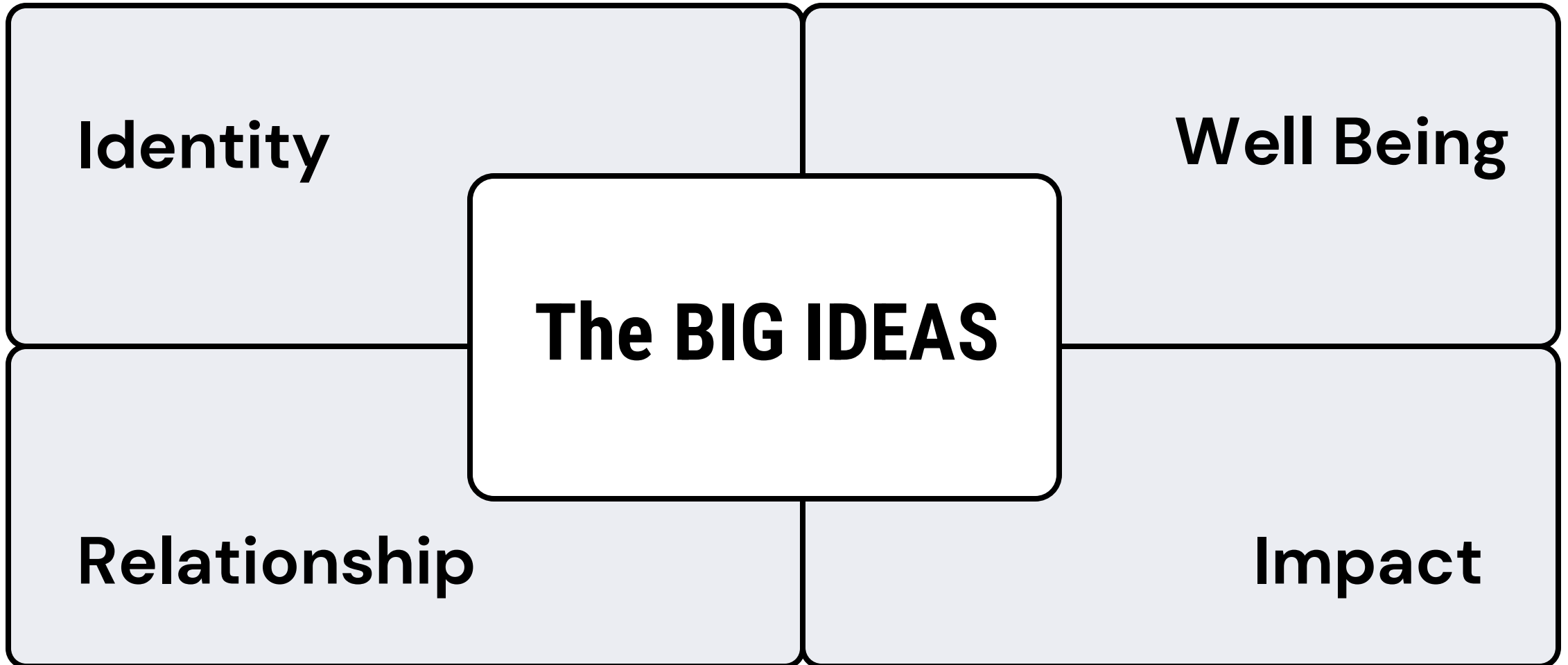
Wrap Up

- Reflections
- Next Steps

A Learning Series

# **Transforming Inclusive Education:**

Designing for Diversity, Equity & Inclusion





# Identity

What does this **look like** in learning?

What does this **sound like** in learning?

What does this **feel like** in learning?



Around the room there are chart papers with a big idea on it.

Walk around to the chart paper and add your thoughts – choose one or many

Write directly on chart paper or write on a post it note to stick on later





# Thinking about the **Big Ideas** and your responses:

Choose one of the questions below and discuss with your group:

- How could an equal emphasis on the **heart and mind** affect how learning experiences are **designed** for all learners?
- What are implications for classrooms and schools if we plan for learners in ways that **respect their diversity** and **honour First Peoples knowledge** about education?
- Why are **high-expectations** important for **equity** and **diversity**?
- How do we plan to **support all learners** through **relationships**?

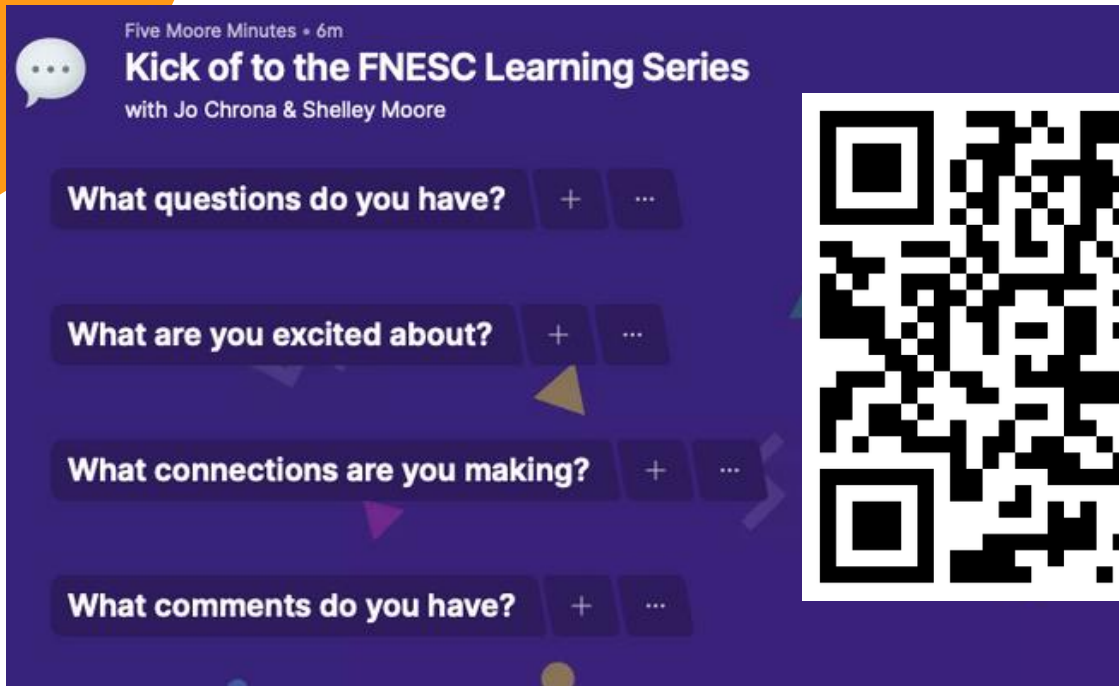


# The Goal of this Learning Series

We can weave aspects of **First Peoples knowledges** and **perspectives** about effective teaching and learning (using the **First Peoples Principles of Learning**) with **Inclusive Education Frameworks and Practices**, to designing for **diversity, inclusion, and equity**.



# Questions, Comments, Responses



or



# Our Plan for Today

Morning with a break  
Unpacking the Learning Series

- Framework

Lunc • 1 hour

Afternoon with a break  
Unpacking the Learning Series

- Overview & Structure
- Fireside Chats

Wrap Up

- Reflections
- Next Steps

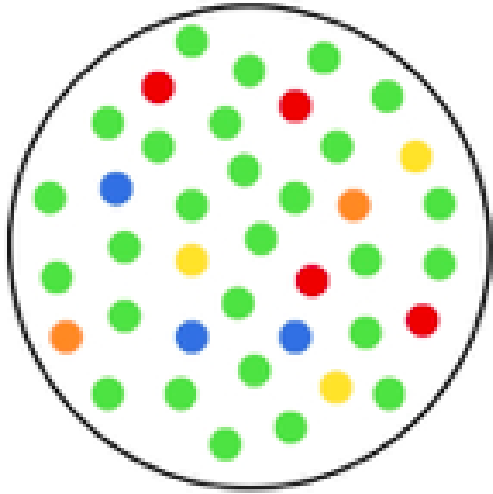
**Break**



**What Does Inclusion Mean to You?**

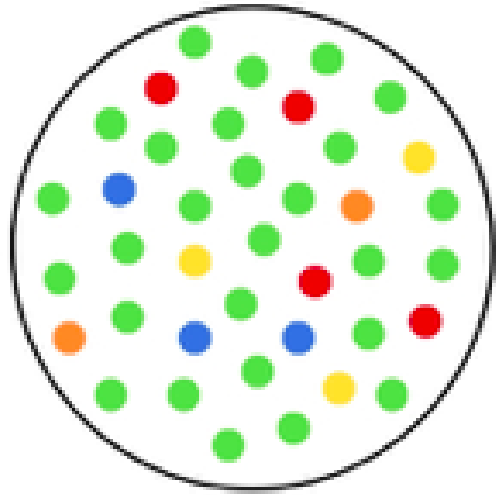


# WHAT IS inclusion ?

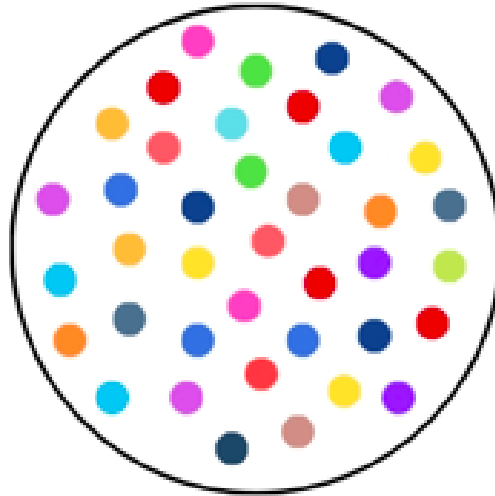


How do we include  
special needs  
students into  
general education  
classrooms?

# WHAT IS inclusion ?



How do we include  
special needs  
students into  
general education  
classrooms?



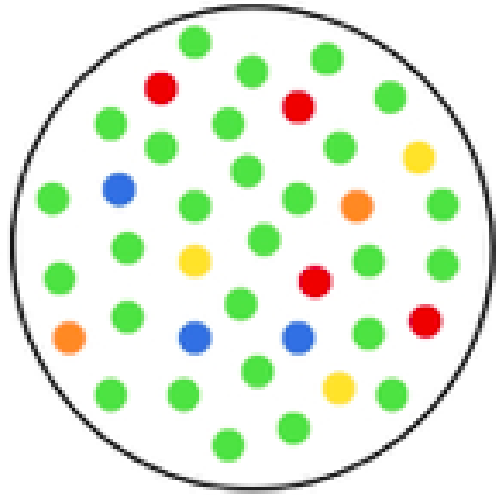
How do we teach  
to diversity?



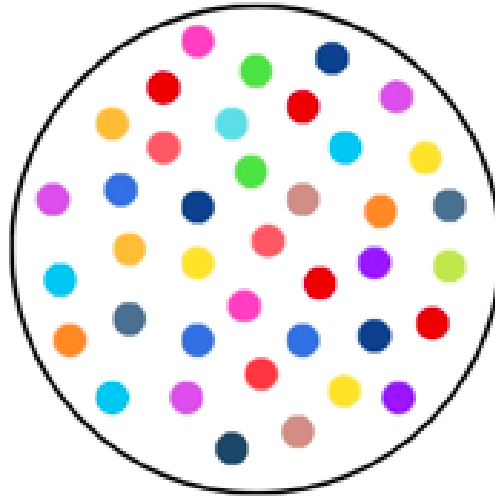
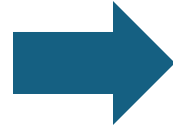
How do you see aspects of **First Peoples knowledges** and **perspectives** connecting to what **inclusion** means (and how it has evolved over time)?



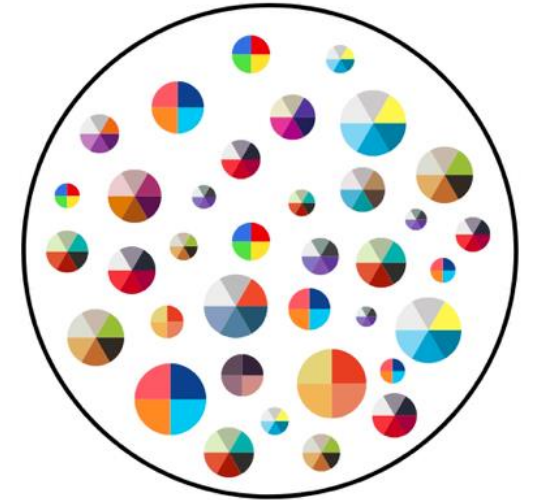
# WHAT IS inclusion ?



How do we include  
special needs  
students into  
general education  
classrooms?



How do we teach  
to diversity?

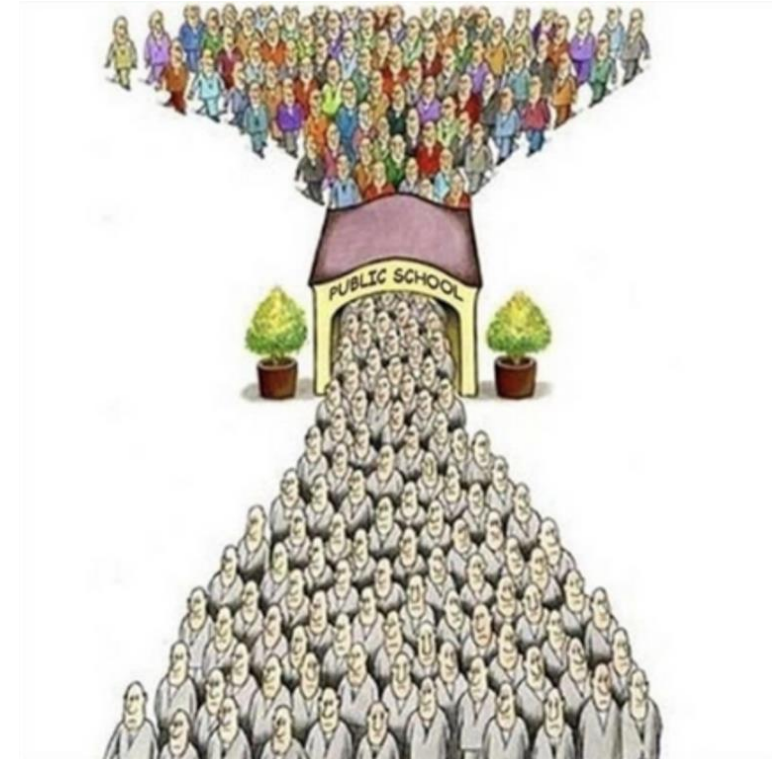
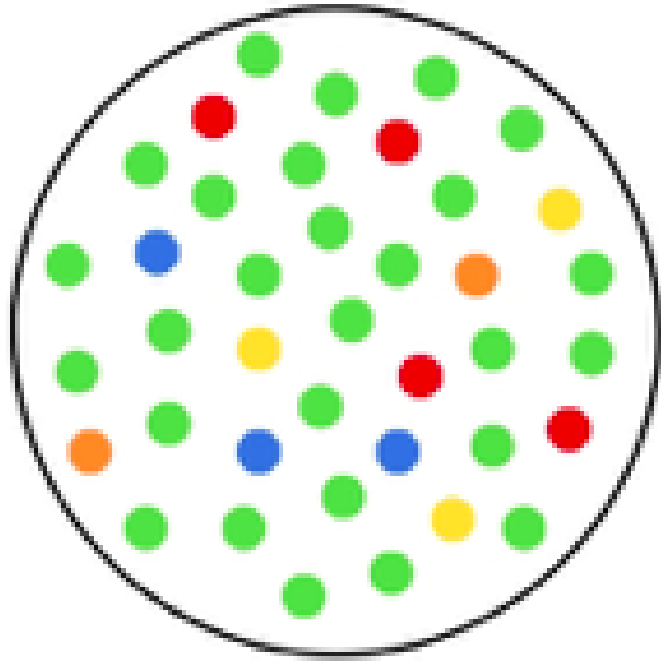


How do we  
teach to identity?

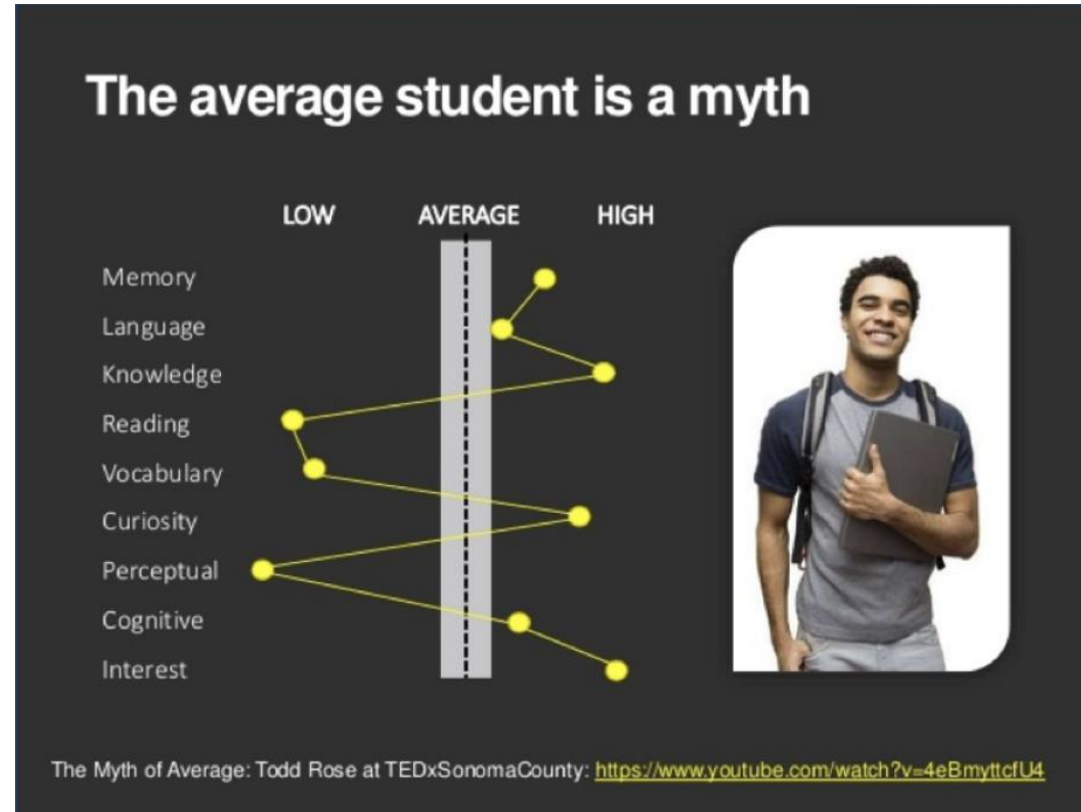
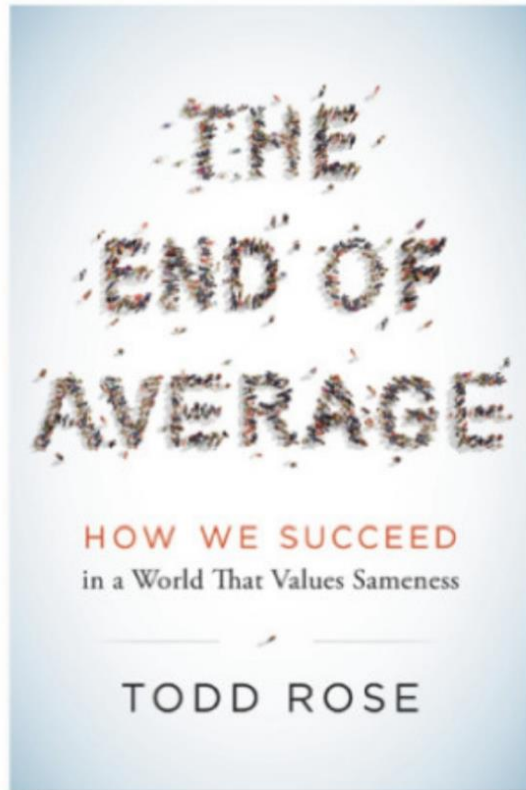
How do you see aspects of **First Peoples knowledges** and **perspectives** connecting to what **inclusion** means (and how it has evolved over time)?



# Where did green come from?

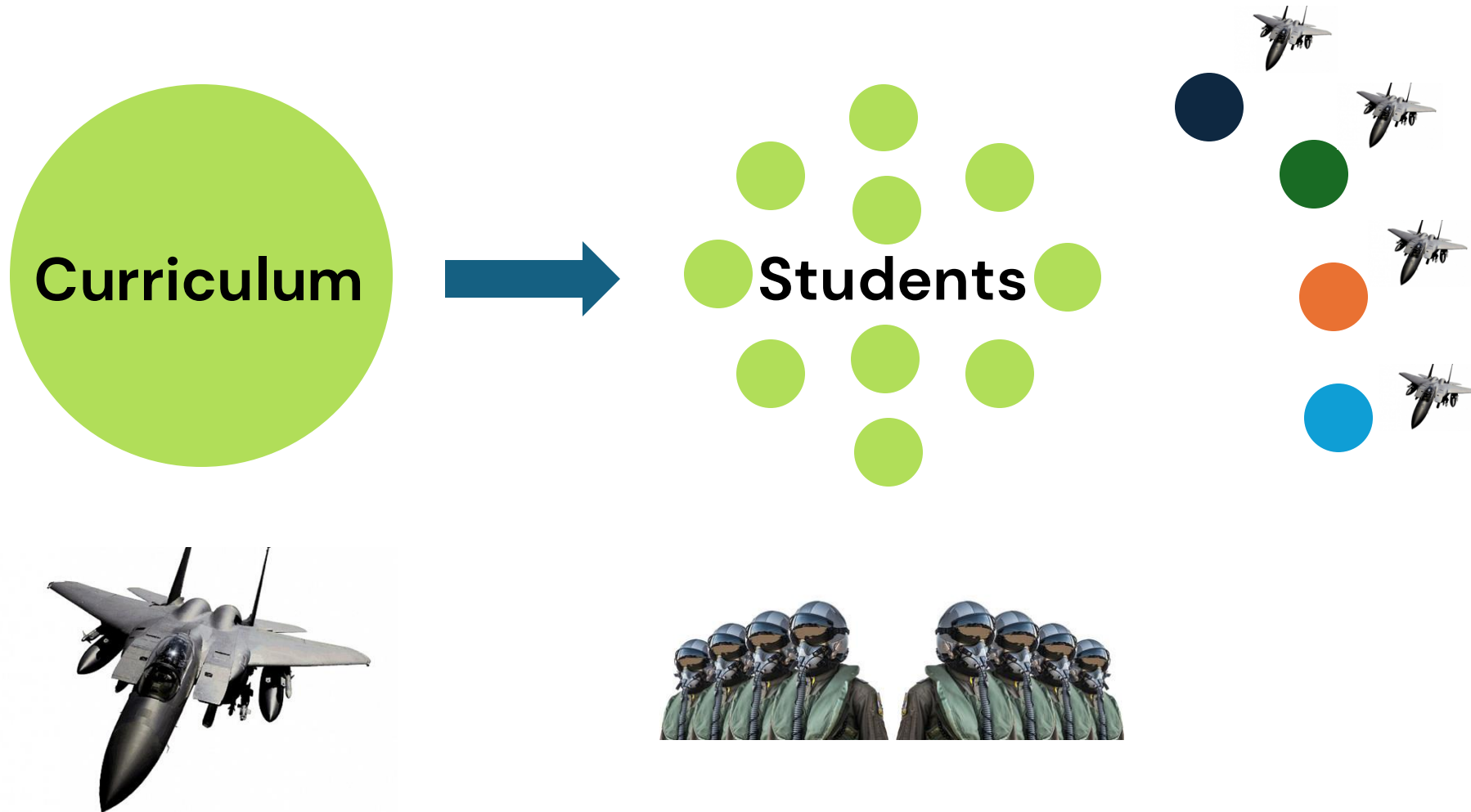


# WHAT IS “normal”?

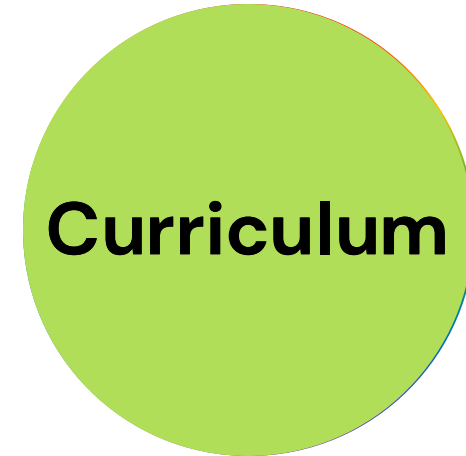
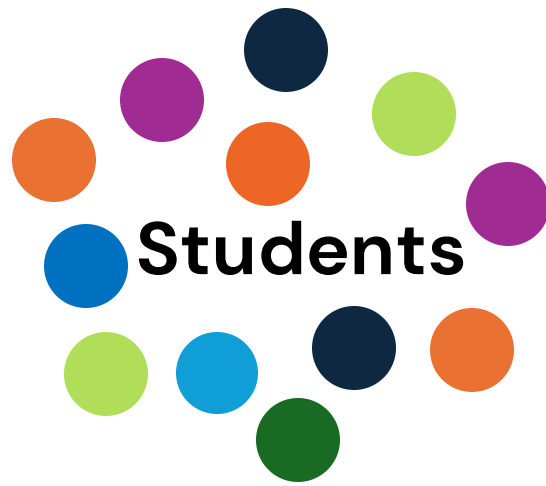


# WHAT IS “average”?

# Standardized Model



# WHAT IF WE ANTICIPATED variability



# INSTEAD OF homogeneity?

# HOW DO WE DESIGN AN ADJUSTABLE PLANE?

- Who are the **pilots**? What are their **dimensions**?
- What kind of **planes** are they flying?
- How is the plane **responsive** to the pilot's dimensions?
- How do the **pilots make the adjustments** they need to fly the plane?





# HOW DO WE DESIGN AN ADJUSTABLE PLANE?

- Who are the **students**? What is their **diversity**?
- What is the **grade level curriculum** that students need to access?
- How is the grade level curriculum **responsive** to the **diversity** of the students?
- How do we help **students to make the adjustments** they need to be successful?



What grade level curriculum are we using?  
What are the learning standards?

## CURRICULUM & ASSESSMENT DESIGN

Student choice of challenge  
Adjustable Curriculum

# Students

Who are the pilots?  
What are their dimensions?  
Where is their agency?

Student choice of evidence  
Adjustable Assessment

## NEEDS BASED DESIGN

What are the student needs?  
What barriers are getting in the way?  
What do student require to navigate  
needs & barriers?

Adjustable Supports & Strategies  
Student choice of tools and actions

## INSTRUCTIONAL DESIGN

How will students show growth  
within the learning standard?  
How do we know?

*Shelley*  
**MOORE** PH.D.

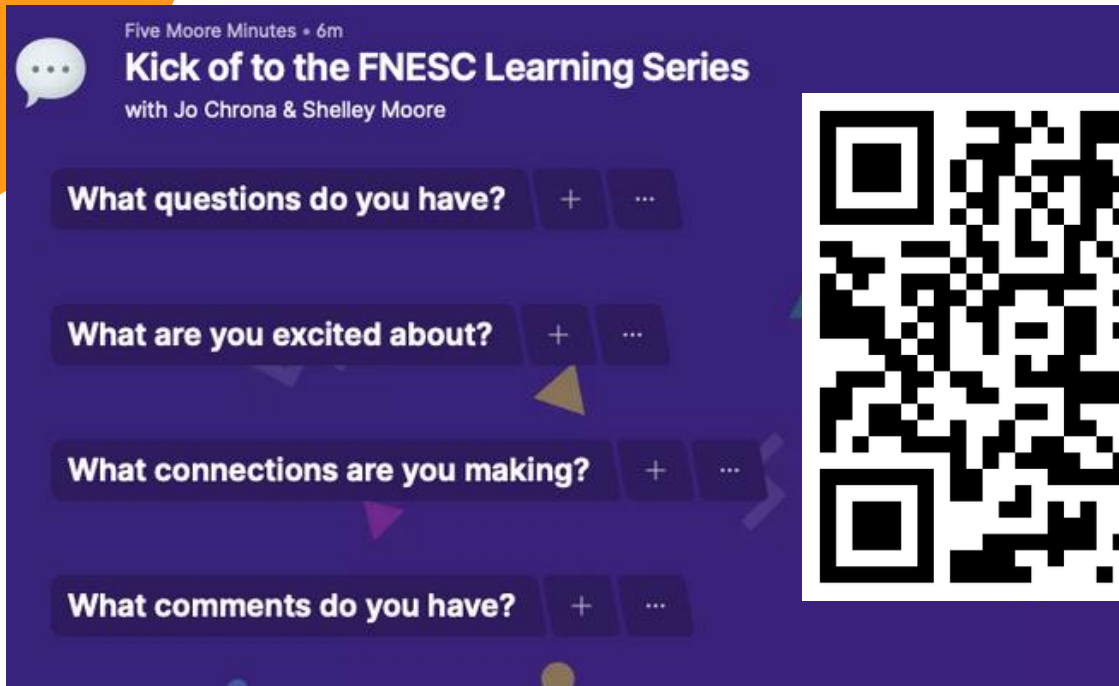
2023

# Reflect and Connect

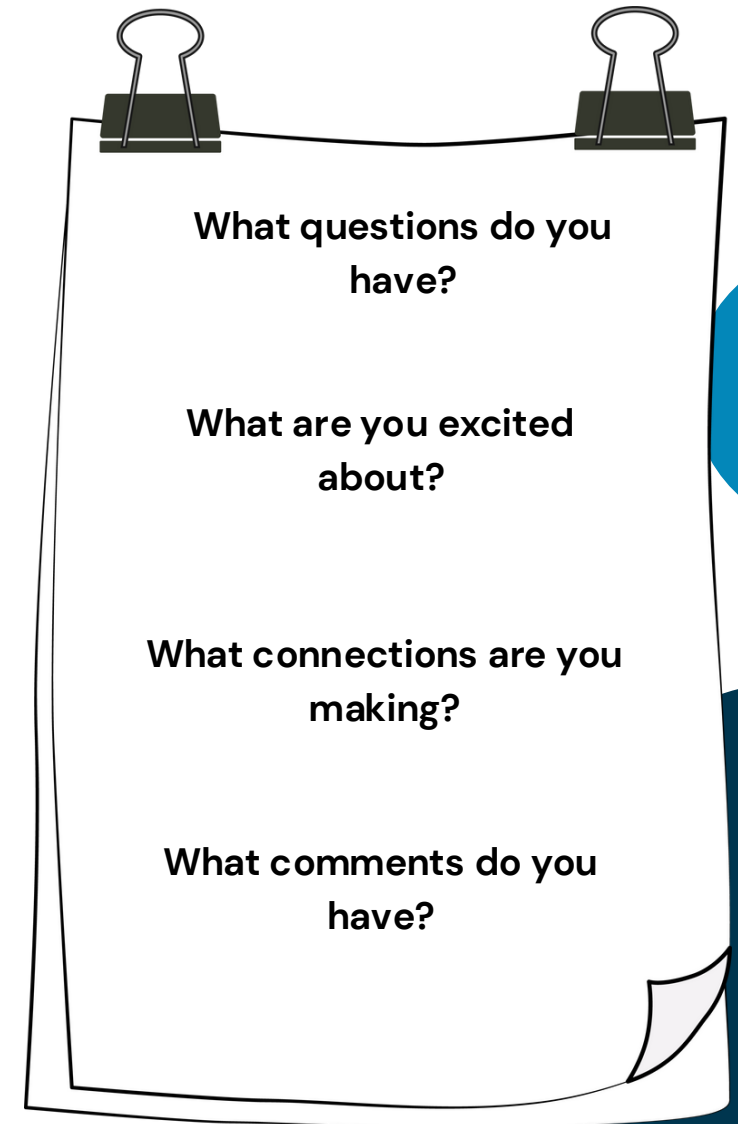
- How do you see the Big Ideas reflected in this Framework?
- What questions are coming up for you?
- What connections do you see to the First Peoples Principles of Learning?



# Questions, Comments, Responses



or



# Our Plan for Today

Lunc • 1 hour

Afternoon with a break  
Unpacking the Learning Series

- Overview & Structure
- Fireside Chats

Wrap Up • Reflections  
• Next Steps

**Lunch**



# Our Plan for Today

Afternoon with a break  
Unpacking the Learning Series

- Overview & Structure
- Fireside Chats

Wrap Up

- Reflections
- Next Steps

What grade level curriculum are we using?  
What are the learning standards?

## CURRICULUM & ASSESSMENT DESIGN

Student choice of challenge  
Adjustable Curriculum

# Students

Who are the pilots?  
What are their dimensions?  
Where is their agency?

Student choice of evidence  
Adjustable Assessment

## NEEDS BASED DESIGN

What are the student needs?  
What barriers are getting in the way?  
What do student require to navigate  
needs & barriers?

Adjustable Supports & Strategies  
Student choice of tools and actions

## INSTRUCTIONAL DESIGN

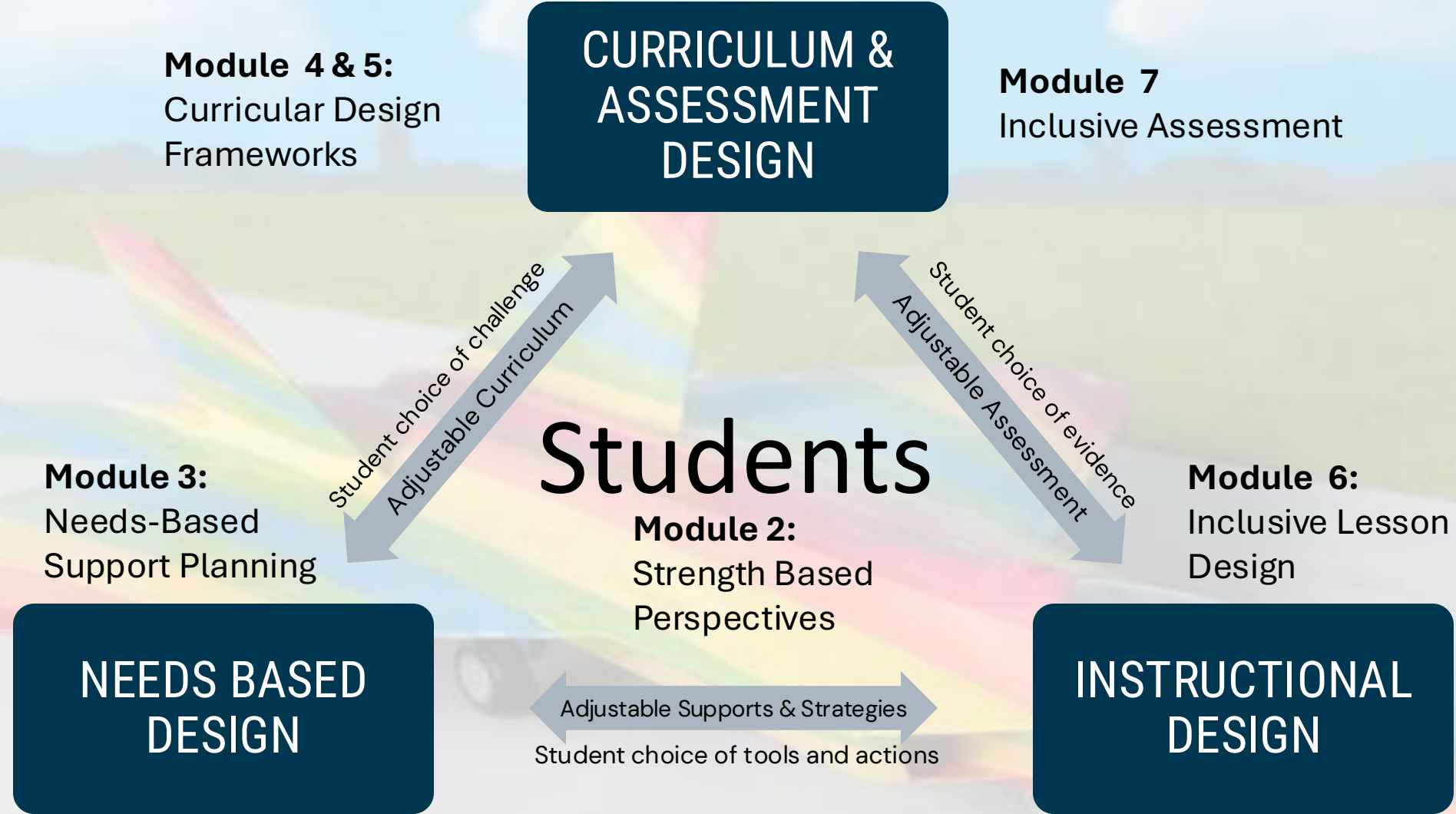
How will students show growth  
within the learning standard?  
How do we know?

*Shelley*  
**MOORE** PH.D.

2023



**Module 1:**  
Situating Ourselves



# Learning Series Structure

- Module 1 - Situating Ourselves and Overview of First Peoples Principles of Learning
- Module 2 - Strengths-Based Perspectives
- Module 3 - Needs-Based Support Planning
- Module 4 - Curricular Design Part 1 – Backwards Design
- Module 5 - Curricular Design Part 2 – Curricular Mapping
- Module 6 - Inclusive Lesson Design
- Module 7 - Inclusive Assessment

# Each Module

- Introduction
- Connecting the Module to FPPL
- Presentation of an inclusive strategy or framework
- Reflection and Discussion Questions
- Fireside Chat!
- Resources & Examples

# Reflect and Connect

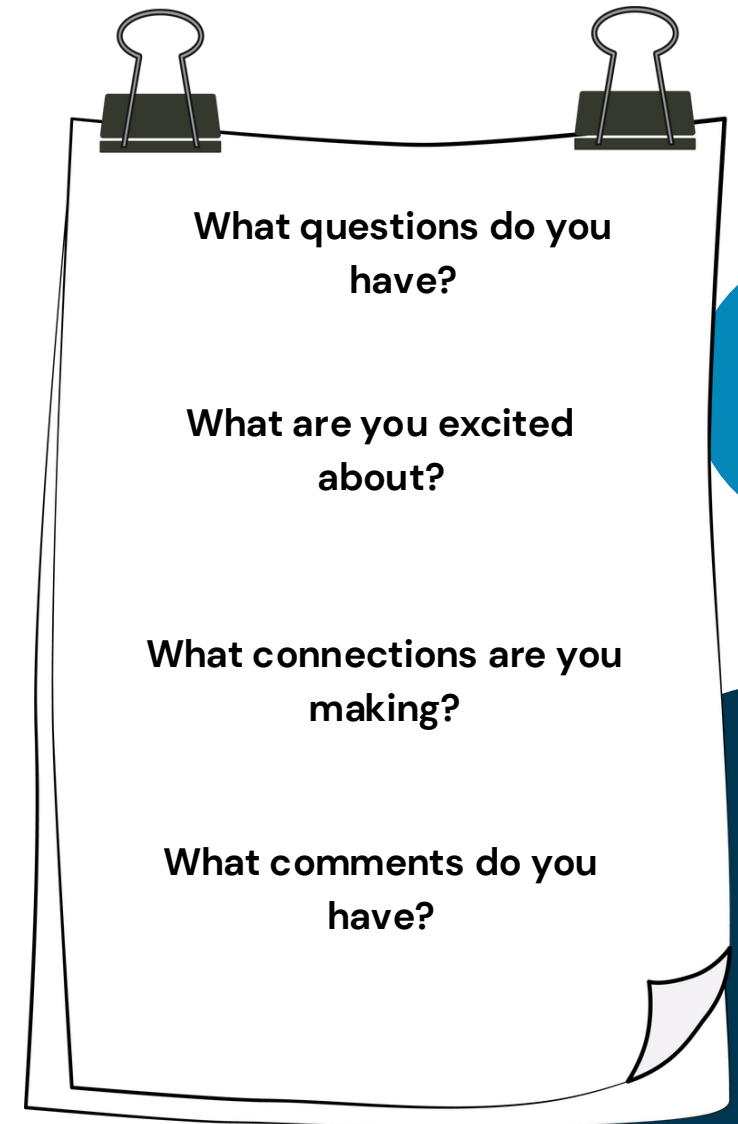
- Which module are you excited about?
- What questions are coming up for you?
- What connections do you see with practices already in action?



# Questions, Comments, Responses



or



**Break**



# Our Plan for Today

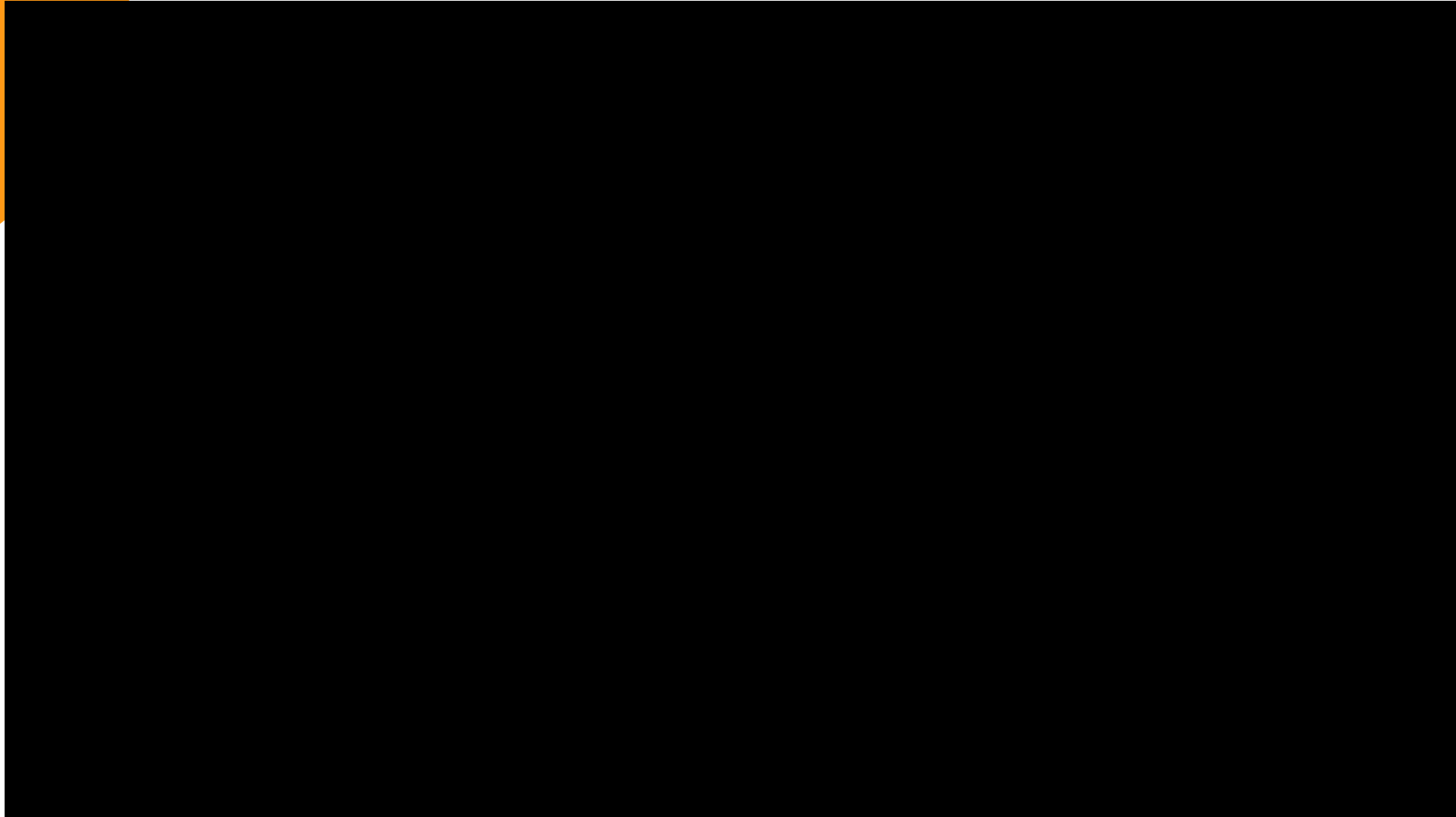
Afternoon with a break  
Unpacking the Learning Series

- Fireside Chats

Wrap Up

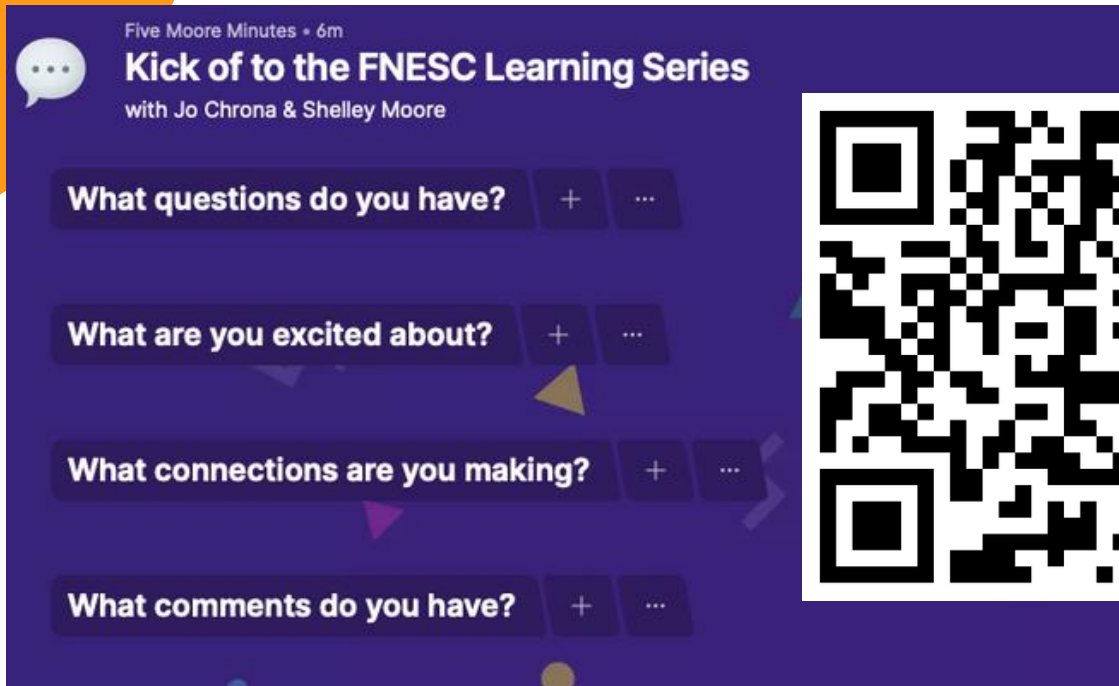
- Reflections
- Next Steps

# Fire Side Chat

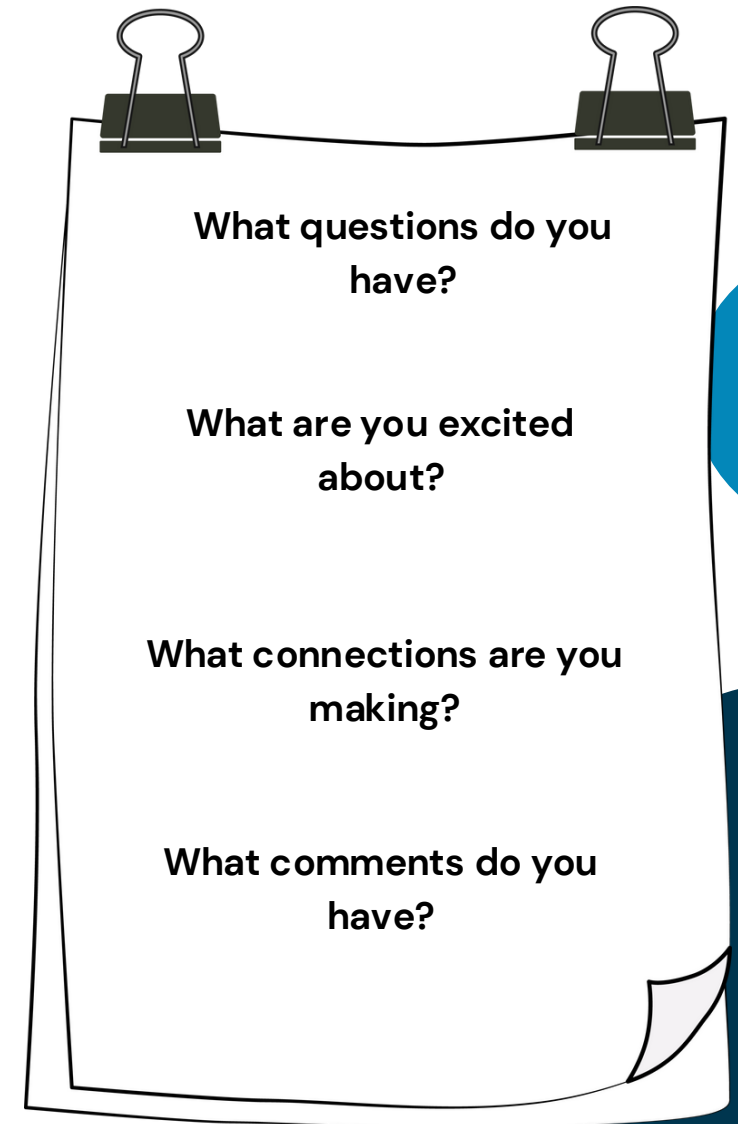




# Questions, Comments, Responses



or



# Our Plan for Today

- Wrap Up
- Reflections
  - Next Steps

# Reflection and Next Steps

- What was useful about today?
- What is a goal you have after today?
- What is your first step of action?
- What support do you need to do this work?





**Jo  
Chrona**



**Dr. Shelley Moore**

**Kick Off to the Learning Series**

**THANK YOU!**